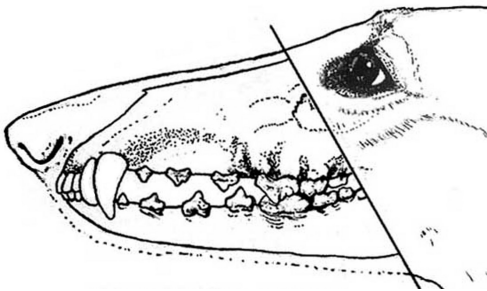


## Virtues

- Presents a picture of effortless power, endurance, speed, agility, smoothness and grace
- Moves with ground covering reach and noticeable balanced drive, with feet tending to converge toward the centerline
- Temperament: never shy nor aggressive, but may be quite aloof
- Unmistakable elegance
- Exhibits power, strength and athleticism



Many judges assume Borzoi are missing teeth when they see spaces between teeth. This is not a reliable way to evaluate mouths.

The easiest way is to look at the pattern of the teeth; from front to back behind the canines, the upper jaw should have 3 premolars followed by a big tooth; the lower jaw should have 4 premolars followed by a big tooth. On both jaws, behind the big teeth, are 2 molars.

**Correct structure and type are more important than teeth.**

## Form and Function

*The Borzoi was originally bred for the coursing of wild game on more or less open terrain, relying on sight rather than scent. To accomplish this purpose, the Borzoi needed particular structural qualities to chase, catch and hold his quarry. Special emphasis is placed on sound running gear, strong neck and jaws, courage and agility, combined with proper condition. The Borzoi should always possess unmistakable elegance, with flowing lines, graceful in motion or repose. Males, masculine without coarseness; bitches, feminine and refined.*

The Borzoi's calm demeanor and sensitive nature belie the fast, powerful and courageous hunter beneath its silky coat. The earliest depictions from the 12th century show Borzoi pursuing a variety of game in their native Russia, a sport which continues worldwide to this day.

Today, they participate in almost every area of canine activity and competition.

## Borzoi Club of America



**Quick  
Reference  
Guide  
for  
Judges**

## HEAD, EARS, EYES and NECK

- Jaws long, powerful, and deep
- Bite scissors or level
- Ears small and fine. May be raised when at attention
- Eyes dark and oval
- Skull slightly domed, long and narrow, with scarcely any perceptible stop
- Inclined to be Roman-nosed (not Roman-headed)
- Neck well set on. Smooth transition to shoulders

## SHOULDERS, CHEST and RIBS

- Shoulders sloping, fine at withers
- Ribs slightly sprung
- Great depth of brisket

## SIZE and WEIGHT

- Size at the withers for adults is at least 28 inches for males and at least 26 inches for bitches
- Weight for adult males is 75 to 105 lbs and 55 to 90 lbs for bitches

## TOPLINE, WITHERS, LOIN and CROUP

- Graceful rise over the loin
- Croup a continuation of graceful curve
- Loin extremely well-muscled
- Back and ribs comparatively short

## HINDQUARTERS

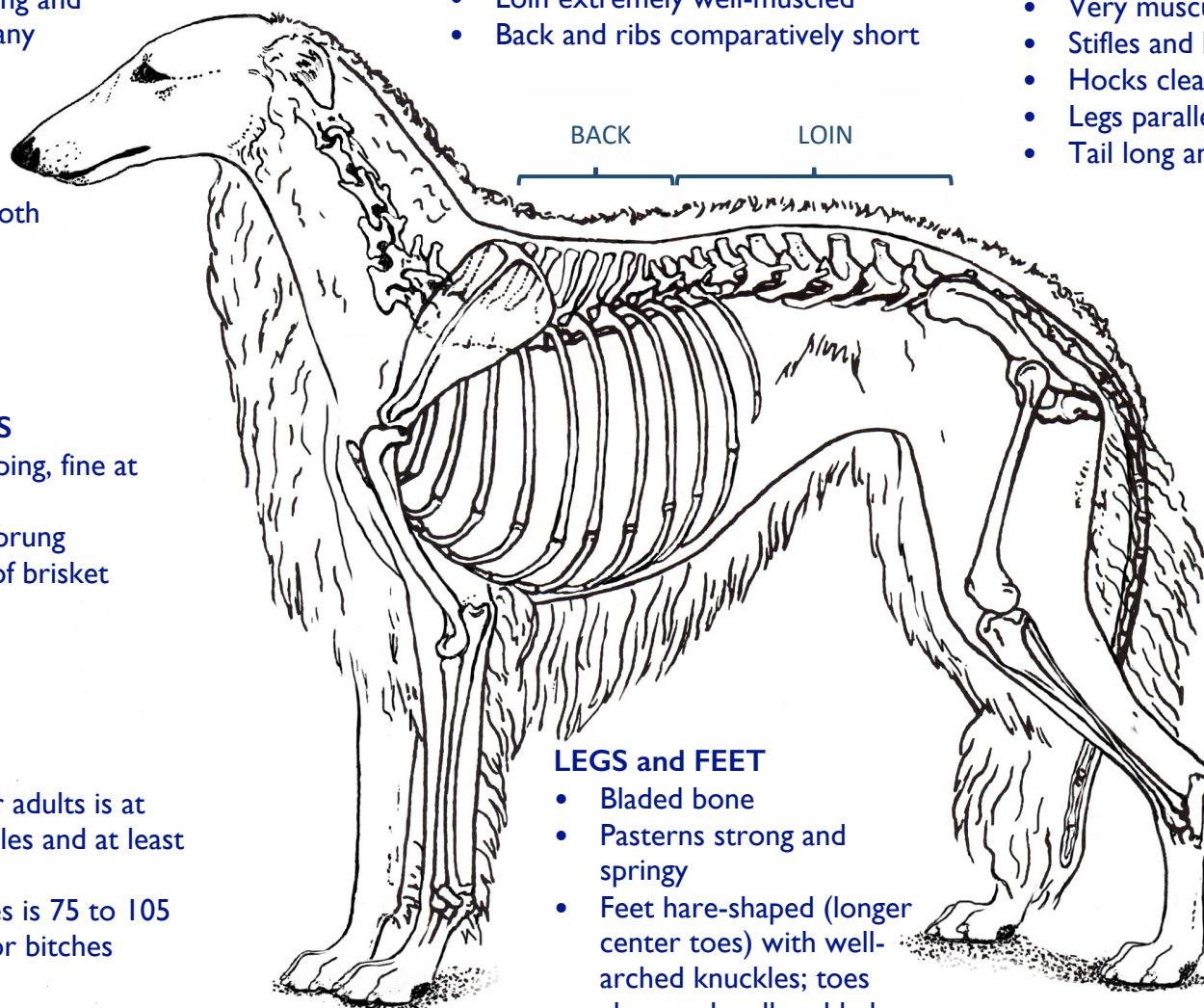
- Hindquarters long
- Somewhat wider than forequarters
- Very muscular and powerful
- Stifles and hocks well-bent
- Hocks clean and well let down
- Legs parallel when viewed from behind
- Tail long and carried low

## COAT

- Any color or combination of colors - none preferred
- Flat, wavy, curly or plush - none preferred
- Texture silky, never woolly
- Structure takes precedence over coat

## LEGS and FEET

- Bladed bone
- Pasterns strong and springy
- Feet hare-shaped (longer center toes) with well-arched knuckles; toes close and well-padded



*The foregoing description is that of the ideal Borzoi. Any deviation from the above described dog must be penalized to the extent of the deviation, keeping in mind the importance of the contribution of the various features toward the basic original purpose of the breed.*